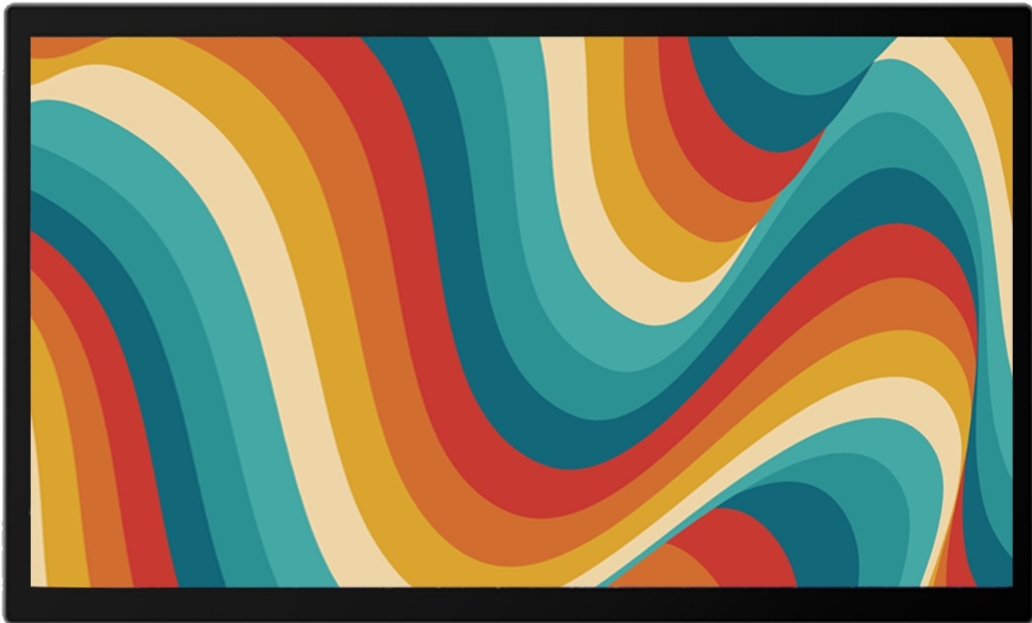


LD-9032W



Bigger Screen Bigger Possibility

Use it as a 2nd screen or a digital signage,
transaction details and marketing campaign message are
beautifully delivered!



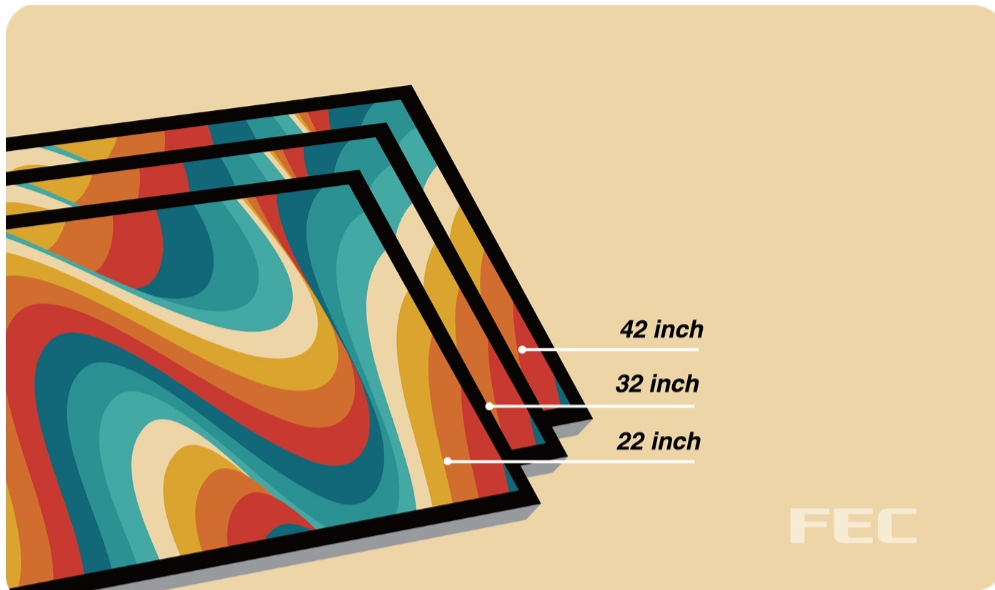
MONITOR Series

Bigger Screen Bigger Possibility.



01/ Slim Border Enhances

Overall Aesthetics!

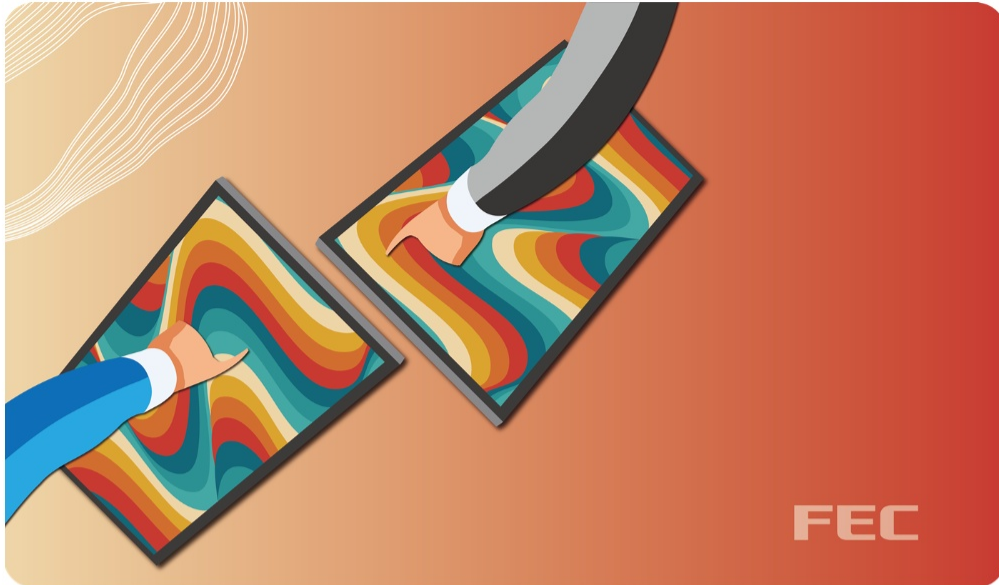


02/ Flexibility

Large Screen helps kitchen system run smoothly.

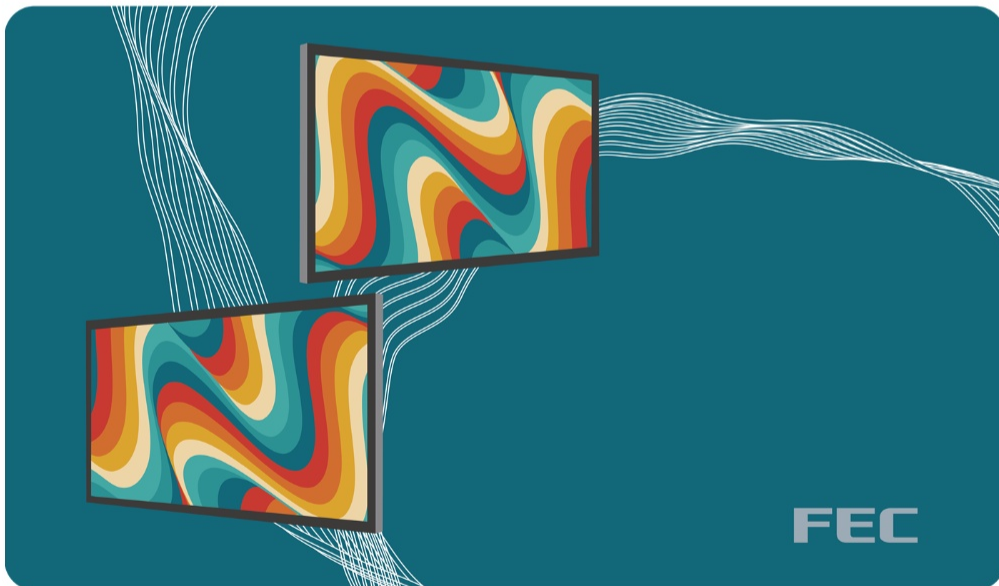


03/ Friendly Touch Panel



04/ Connectivity?

All You Needs!



05/ Where You Want! Where You MOUNT!

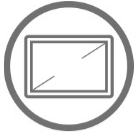


06/ Multiple Solutions

22", 32", or 42" The Best Choice!



Specifications



Display

- 31.5" TFT , 1920 x 1080



Touch

- True-Flat PCAP
- Optional:
 - Hovering Touch (Support additional 3mm max glass)
 - AG Coating



Brightness

- 400 nits



MTBF

- 70K Hours



Speaker

- None



Power

- 12V/100W Internal Switching Power Supply



Mounting

- Panel Mount
- Rear Mount
- VESA 200 x 200 mm



Certification

- FCC / CE Class B



Appearance

- Metal SGCC



Temperature

- Operation: 0 °C ~ 40 °C (32 °F ~ 104 °F)
- Storage: -20 °C ~ 60 °C (-4 °F ~ 140 °F)



Dimensions (W x H x D)

- Product: 741.40 x 442.85 x 66.90 mm
- Carton: 838 x 186 x 558 mm



Weight

- Display Only (Net): 12.5 Kg
- Display Only (Gross): 15 Kg



Port

- AD board Version:
 - 1 x HDMI
 - 1 x VGA
 - 1 x USB 2.0 Type B
 - 1 x DC-in 12V
 - 1 x RJ11



Optional

- Optional External OSD Keypad