



Philips  
Full HD LCD monitor

### V Line

27" (68.6 cm)  
1920 x 1080 (Full HD)

273V7QDAW



## Vivid, crisp images, from edge-to-edge

A perfect all around display with stunning images that stretch from edge-to edge, made easy on the eyes, in a compact slim design.

#### **Vivid pictures every time**

- IPS LED wide view technology for image and color accuracy
- 16:9 Full HD display for crisp detailed images
- Narrow border display for a seamless appearance
- SmartContrast for rich black details
- SmartImage presets for easy optimized image settings

#### **Easy on the eyes**

- Less eye fatigue with Flicker-free technology
- LowBlue Mode for easy on-the-eyes productivity
- EasyRead mode for a paper-like reading experience

#### **Experience true multimedia**

- Built-in speakers for audio without desktop clutter
- HDMI-ready for Full HD entertainment

#### **Perfectly designed for your space**

- VESA mount allows for flexibility

# PHILIPS

Full HD LCD monitor  
V Line 27" (68.6 cm), 1920 x 1080 (Full HD)

273V7QDAW/75

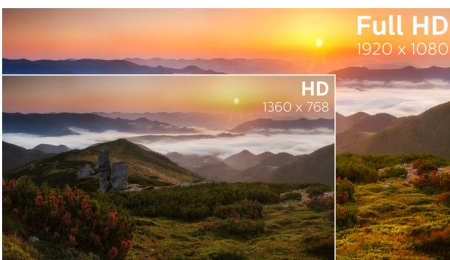
# Highlights

## IPS technology



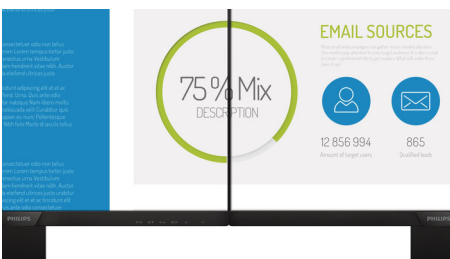
IPS displays use an advanced technology which gives you extra wide viewing angles of 178/178 degree, making it possible to view the display from almost any angle. Unlike standard TN panels, IPS displays gives you remarkably crisp images with vivid colors, making it ideal not only for Photos, movies and web browsing, but also for professional applications which demand color accuracy and consistent brightness at all times.

## 16:9 Full HD display



Picture quality matters. Regular displays deliver quality, but you expect more. This display features enhanced Full HD 1920 x 1080 resolution. With Full HD for crisp detail paired with high brightness, incredible contrast and realistic colors expect a true to life picture.

## UltraNarrow Border



The new Philips displays feature ultra-narrow borders which allow for minimal distractions

and maximum viewing size. Especially suited for multi-display or tiling setup like gaming, graphic design and professional applications, the ultra-narrow border display gives you the feeling of using one large display.

## SmartContrast



SmartContrast is a Philips technology that analyzes the contents you are displaying, automatically adjusting colors and controlling backlight intensity to dynamically enhance contrast for the best digital images and videos or when playing games where dark hues are displayed. When Economy mode is selected, contrast is adjusted and backlighting fine-tuned for just-right display of everyday office applications and lower power consumption.

## SmartImage



SmartImage is an exclusive leading edge Philips technology that analyzes the content displayed on your screen and gives you optimized display performance. This user friendly interface allows you to select various modes like Office, Photo, Movie, Game, Economy etc., to fit the application in use. Based on the selection, SmartImage dynamically optimizes the contrast, color saturation and sharpness of images and videos for ultimate display performance. The Economy mode option

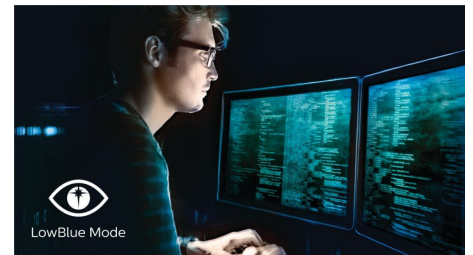
offers you major power savings. All in real time with the press of a single button!

## Flicker-free technology



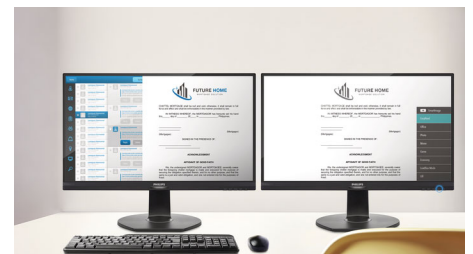
Due to the way brightness is controlled on LED-backlit screens, some users experience flicker on their screen which causes eye fatigue. Philips Flicker-free Technology applies a new solution to regulate brightness and reduce flicker for more comfortable viewing.

## LowBlue Mode



Studies have shown that just as ultra-violet rays can cause eye damage, shortwave length blue light rays from LED displays can cause eye damage and affect vision over time. Developed for wellbeing, Philips LowBlue Mode setting uses a smart software technology to reduce harmful shortwave blue light.

## EasyRead mode



EasyRead mode for a paper-like reading experience



# Specifications

## Picture/Display

- LCD panel type: IPS technology
- Backlight type: W-LED system
- Panel Size: 27 inch / 68.6 cm
- Display Screen Coating: Anti-Glare, 3H, Haze 25%
- Effective viewing area: 597.89 (H) x 336.31 (V)
- Aspect ratio: 16:9
- Optimum resolution: 1920 x 1080 @ 60 Hz
- Pixel Density: 82 PPI
- Response time (typical): 5 ms (GtG)\*
- Brightness: 250 cd/m<sup>2</sup>
- SmartContrast: 10,000,000:1
- Contrast ratio (typical): 1000:1
- Pixel pitch: 0.311 x 0.311 mm
- Viewing angle: 178° (H) / 178° (V), @ C/R > 10
- Flicker-free
- Display colors: 16.7 M
- Scanning Frequency: 30 - 83 kHz (H) / 56 - 76 Hz (V)
- LowBlue Mode
- sRGB

## Connectivity

- Signal Input: VGA (Analog), DVI-D (digital, HDCP), HDMI (digital, HDCP)
- Sync Input: Separate Sync, Sync on Green
- Audio (In/Out): PC audio-in, Headphone out

## Convenience

- Built-in Speakers: 2W x 2
- User convenience: Power On/Off, Menu/OK, Volume/Up, Input/Down, SmartImage/Back
- OSD Languages: Brazil Portuguese, Czech, Dutch, English, Finnish, French, German, Greek, Hungarian, Italian, Japanese, Korean, Polish, Portuguese, Russian, Spanish, Simplified Chinese, Swedish, Turkish, Traditional Chinese, Ukrainian
- Other convenience: Kensington lock, VESA mount (100x100mm)
- Plug & Play Compatibility: DDC/CI, Mac OS X, sRGB, Windows 10 / 8.1 / 8 / 7

## Stand

- Tilt: -5/20 degree

## Power

- On mode: 15.40 W (typ.) (EnergyStar test method)
- Standby mode: 0.5 W (typ.)
- Off mode: 0.3 W (typ.)
- Power LED indicator: Operation - White, Standby mode- White (blinking)
- Power supply: Built-in, 100-240VAC, 50-60Hz

## Dimensions

- Product with stand (mm): 612 x 453 x 227 mm
- Product without stand (mm): 612 x 367 x 45 mm
- Packaging in mm (WxHxD): 664 x 452 x 134 mm

## Weight

- Product with stand (kg): 4.50 kg
- Product without stand (kg): 4.04 kg
- Product with packaging (kg): 6.47 kg

## Operating conditions

- Temperature range (operation): 0°C to 40°C °C
- Temperature range (storage): -20°C to 60°C °C
- Relative humidity: 20%-80 %
- Altitude: Operation: +12,000ft (3,658m), Non-operation: +40,000ft (12,192m)
- MTBF: 50,000 (Excluded backlight) hour(s)

## Sustainability

- Environmental and energy: EnergyStar 7.0, RoHS, Mercury Free, WEEE
- Recyclable packaging material: 100 %

## Compliance and standards

- Regulatory Approvals: CU, SEMKO, cETLus, TUV/ISO9241-307, CE Mark, FCC Class B, ICES-003, TUV Cert. - blue light cut-off, RCM

## Cabinet

- Color: White
- Finish: Textured



Issue date 2022-04-21

Version: 3.0.1

12 NC: 8670 001 65842  
EAN: 87 12581 76510 1

© 2022 Koninklijke Philips N.V.  
All Rights reserved.

Specifications are subject to change without notice.  
Trademarks are the property of Koninklijke Philips N.V.  
or their respective owners.

[www.philips.com](http://www.philips.com)

\* "IPS" word mark / trademark and related patents on technologies belong to their respective owners.

\* Response time value equal to SmartResponse