

element

# K959

Touch All-in-One Design with  
Built-in Hot Swap Batteries





## Medical Cart

Element 21.5" K959 Panel PC is dedicated to medical mobile workstation , it resists on repeated disinfection , cover with antibacterial Plastic Materials and swappable batteries for advanced Cleanliness and easy serviceability.

# Comprehensive I/O Ports

All peripherals are perfectly connected with K959 especially 24V Powered USB



# Swappable Batteries & Lockable Design

Swappable batteries and lockable keys are for 24H un-plug service and strong batteries security.



# Capacitive Sensor Touch Function Keys

Seamless and Flat Capacitive Sensor Touch required  
High level cleanliness and resist for frequent disinfection  
Four unique keys provide Lightning, Lockable and Programmable service



LED Reading Light



Touch Screen Lock Key



Touch Screen Unlock Key



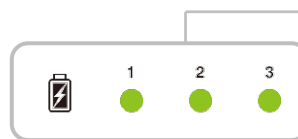
Programmable Function Key

# K959 FEATURES

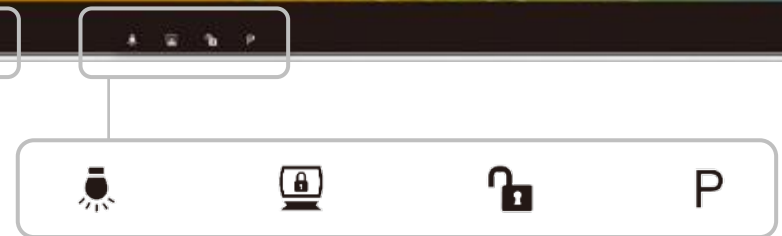


2M Front Camera (Option)

21.5" True-Flat PCAP Multi-Touch  
Front IP65  
Full HD (1920x1080)



Batteries Status



LED Reading  
Light

Touch Screen  
Lock Key

Touch Screen  
Unlock Key

Programmable  
Function Key

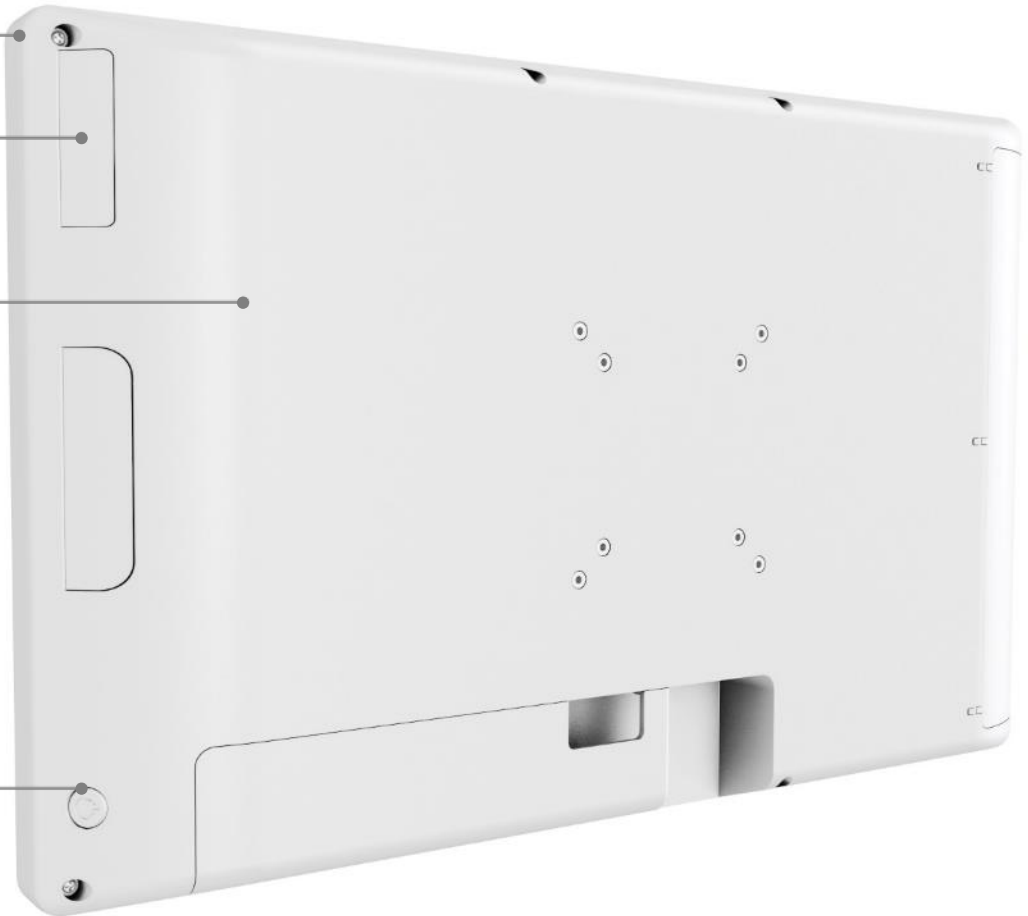
# K959 FEATURES

Anti-Bacterial Plastic Material

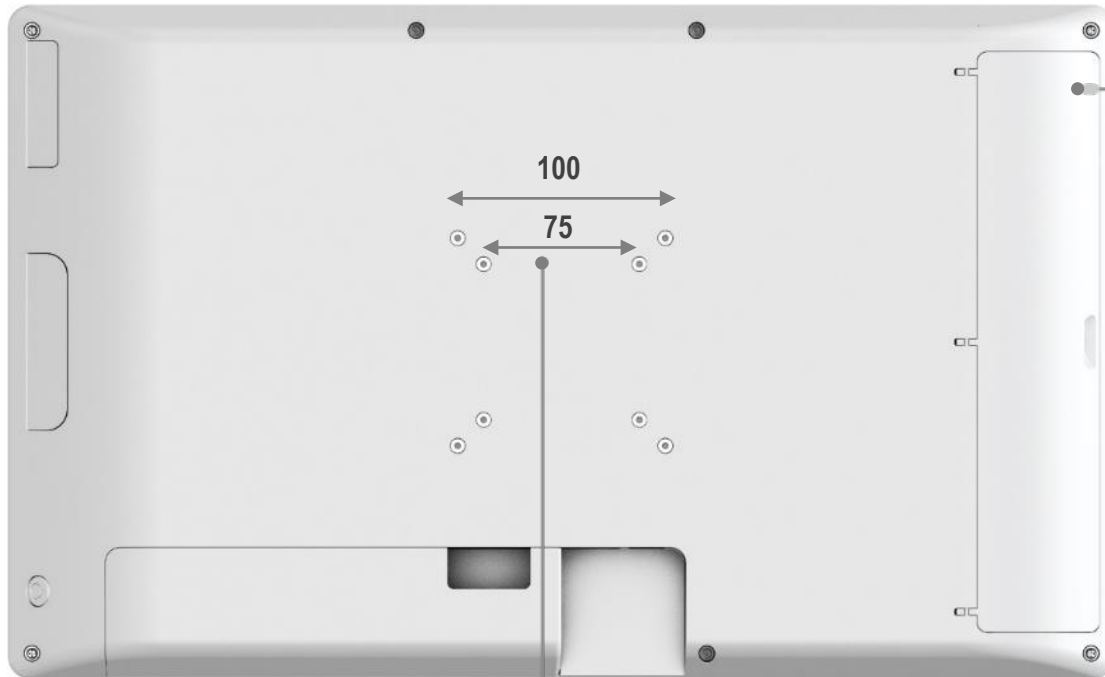
Combo Card Reader  
(RFID & IC Card Reader)

IPX1 Enclosure  
Fanless Design

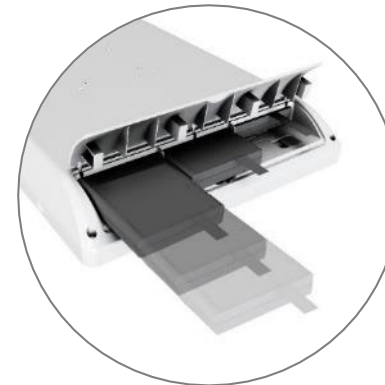
Power Button



# K959 FEATURES



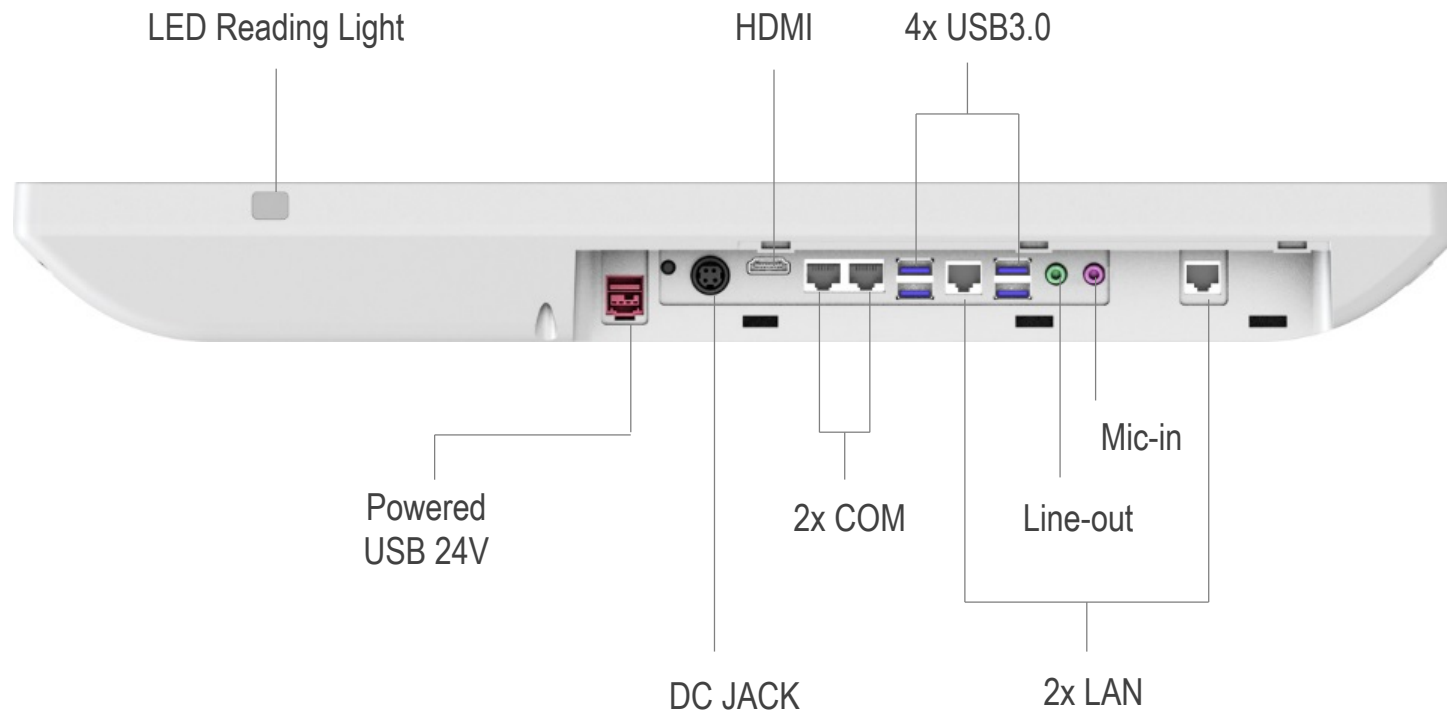
Batteries

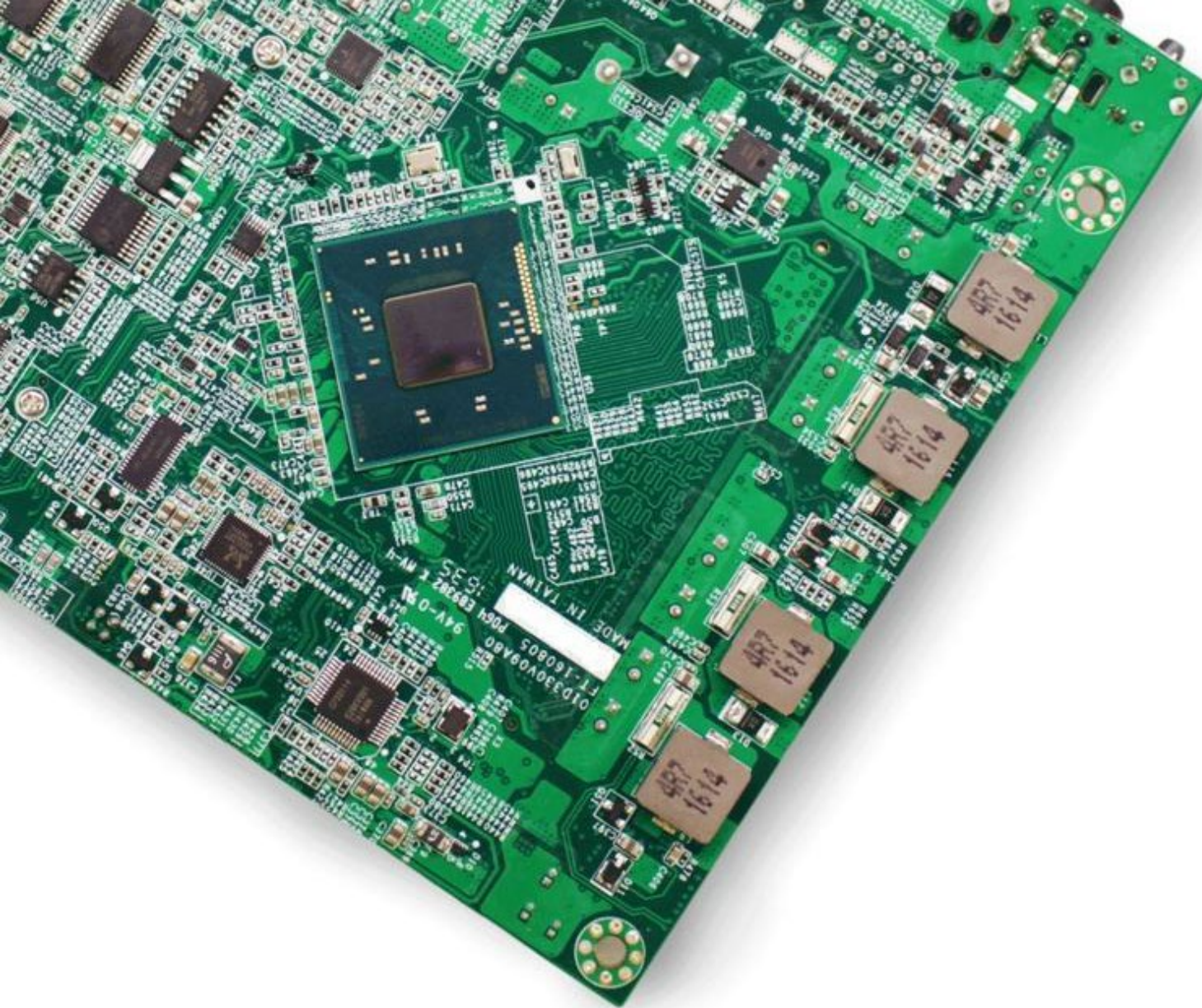


VESA Mount  
75x75, 100x100



# K959 FEATURES





# K959 SPECIFICATION

# K959 SPECS

<b>System</b>	<b>Motherboard</b> Processor System Memory Storage Device	<i>D87U</i> Intel Skylake U Celeron 3955U, i3-6100U, i5-6300U 2x DDR4 2133MHz SO-DIMM (Up to 32GB; Dual-Channel) 1x 2.5" SATA HDD or SSD Module
<b>LCD Touch Panel</b>	LCD Size Brightness Resolution Touch Screen	21.5" (16:9 Ratio) 250 nits 1920 x 1080 PCAP Multi-Touch
<b>External I/O Ports</b>	USB LAN Audio Jack HDMI Serial Port Power Button DC Jack	4x USB3.0, 1x 24V Powered USB 2x RJ45 1x Line-out, 1x Mic-in 1 2x RJ48 1 1
<b>Audio</b>	Internal Speaker	1x 3W
<b>Peripherals</b>	Webcam LED Indicator LED Reading Light RFID or IC Card Reader	2MP (Option) 3 (Batteries Status) 1 1
<b>Battery &amp; Power</b>	Battery Pack Power Adapter Wide Range Power Input	3x 7500mAh Hot Swappable Battery (Up to 12 hours*) 180W / 19V 9-48V

\*Depends on loading

# K959 SPECS

<b>Communication</b>	<i>Wireless LAN + BT</i>	<i>802.11 a/b/g/n/ac, 2.4G/5GHz, BT4.0</i>
<b>Camera</b>	<i>Front Camera</i>	<i>2MP(Optional)</i>
<b>Certificate</b>	<i>EMC &amp; Safety Medical Grade</i>	<i>FCC Class A, CE Mark, LVD EN60601-1-2:2015, ANSI/AAMI ES60601-1</i>
<b>Environment</b>	<i>Dust &amp; Water Proof ESD Operating Temperature Storage Temperature Humidity</i>	<i>IP65, IPX1(Enclosure) 8kV Contact Discharge, 15kV Air Discharge 0°C ~ 35°C (32°F ~ 95°F) (Still Air) -20°C ~ 60°C (-4°F ~ 140°F) 20% ~ 90% RH Non-Condensing</i>
<b>Dimensions</b>		<i>533 x 59 x 325 mm (17.4" x 1.9" x 10.7")</i>
<b>Weight</b>		<i>7kg (15.4 lbs)</i>
<b>OS Supported</b>		<i>Windows 8.1 64bit, Windows 10 IOT LTSC 64bit, Linux</i>

# K959

The Next Generation of All-In-One Medical Solution