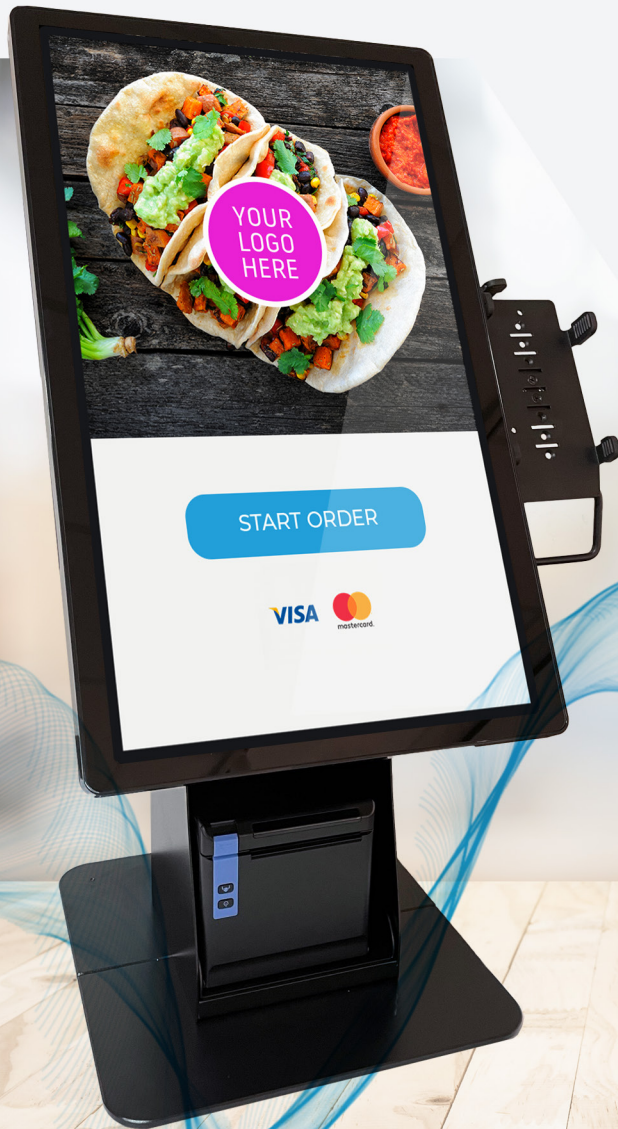


element™



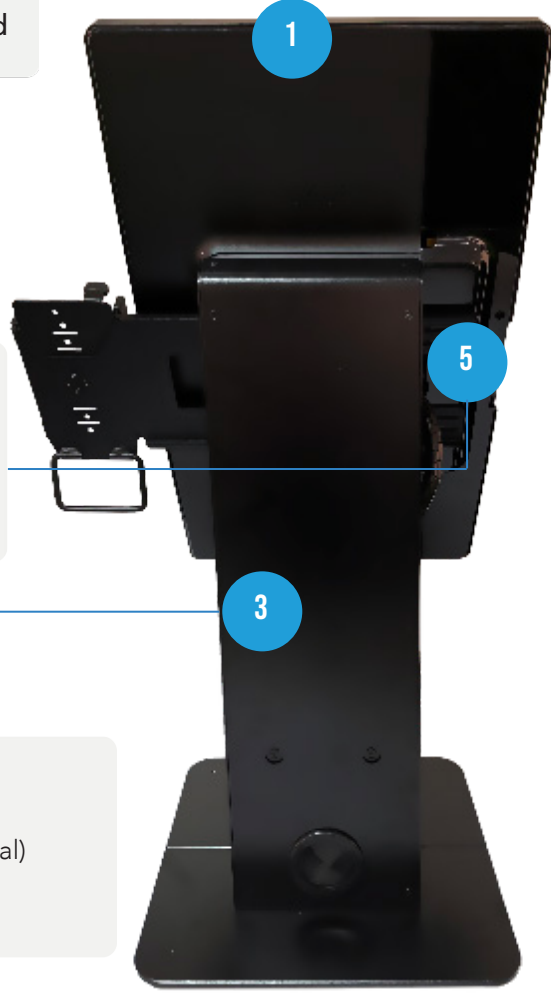
## ELEMENT 22" SELF SERVICE KIOSK

MODULARITY TO SUIT YOUR DESIRED APPLICATIONS

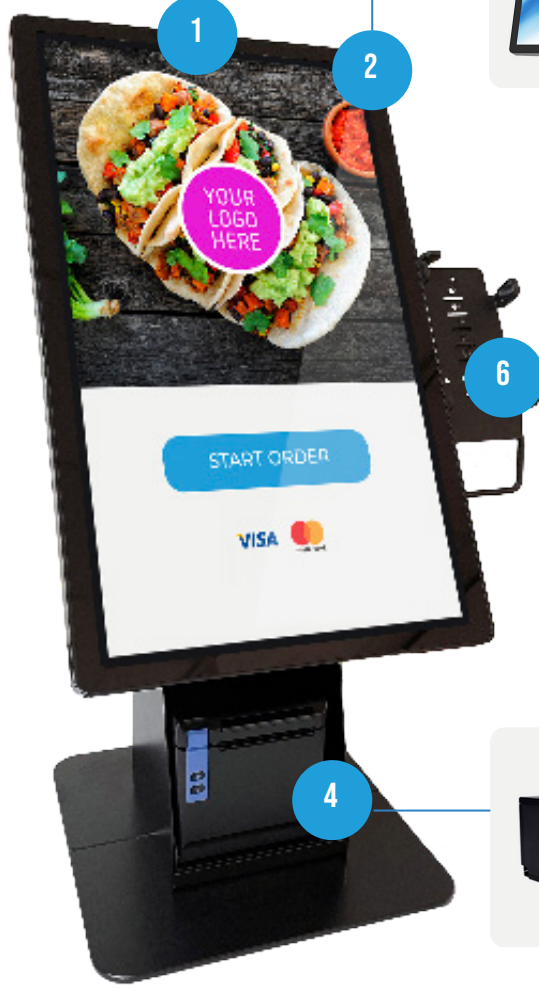
# ELEMENT 22" SELF SERVICE KIOSK

MODULARITY TO SUIT YOUR DESIRED APPLICATIONS

Element 22" All-in-One Windows or Android Self-Service Kiosk and Counter Stand



Element K22 All-in-One Windows or Android Touch Screen Kiosk



Payment Terminal Multi-Grip Mounts (Optional)

VESA Payment Terminal Mount (Optional)

Thermal Receipt Printer (Optional)

Counter Stand (Floor Stand optional)

# 1 ELEMENT SELF-SERVICE BUNDLE WITH ELEMENT 22" KIOSK AND COUNTER STAND

The Element Self Service Kiosk E-Series is a quality, affordable and modular solution, designed to meet the self-service needs of customers, retailers and many industry applications. Offering a counter top or free standing floor stand with a 22" all-in-one touch computer you can add optional accessories and peripherals to allow innovative ways for your customers to interact with your brand however you choose:

- Self Check Out
- Self Ordering
- Guest Check-In
- Visitor Management
- Endless Aisle
- Product information
- Digital Signage
- Price Checker

To provide you the versatility to suit the application or software, the Element SSK uses an Element K22 All-in-one 22" projective capacitive touch screen computer offering both Android and Windows operating system, mounted on a purposefully designed counter stand with optional floor stand extension. The SSK2201-C Stand includes a dedicated receipt printer space with full cable management and optional accessory mount which allows you to simply add a payment terminal to your kiosk or add an additional 2D Barcode scanner. The Element SSK E-Series is simplified to allow ease of installation and provide you the modularity to suit your desired applications.



| OS      | SKU     | DESCRIPTION   |
|---------|---------|---|
| Android | BU10982 | <p><b>ELEMENT KIOSK SSK-E 21.5P 4/32 AD9 + DESK/STD INCL:</b></p> <ul style="list-style-type: none"> <li>• 21.5" AIO Android 9 Touch Screen Computer</li> <li>• RK3399 with 4GB Ram and 32GB Storage</li> <li>• SSK2201-C Counter Stand Black</li> <li>• 3 year warranty</li> </ul>                                       |
| Windows | BU10983 | <p><b>ELEMENT KIOSK SSK-E 21.5P J1900 8/128 W10+DESK/STD INCL:</b></p> <ul style="list-style-type: none"> <li>• 21.5" AIO Windows 10 IoT Ent 2019 Touch Screen Computer</li> <li>• Intel Baytrail J1900 CPU with 8GB Ram and 128GB Storage</li> <li>• SSK2201-C Counter Stand Black</li> <li>• 3 year warranty</li> </ul> |
| Windows | BU10984 | <p><b>ELEMENT KIOSK SSK-E 21.5P I3 8/128 W10 + DESK/STD INCL:</b></p> <ul style="list-style-type: none"> <li>• 21.5" AIO Windows 10 IoT Ent 2019 Touch Screen Computer</li> <li>• Intel i3-7100U CPU with 8GB Ram and 128GB Storage</li> <li>• SSK2201-C Counter Stand Black</li> <li>• 3 year warranty</li> </ul>        |

## 2 ELEMENT 22" ALL-IN-ONE WINDOWS OR ANDROID TOUCH SCREEN KIOSKS

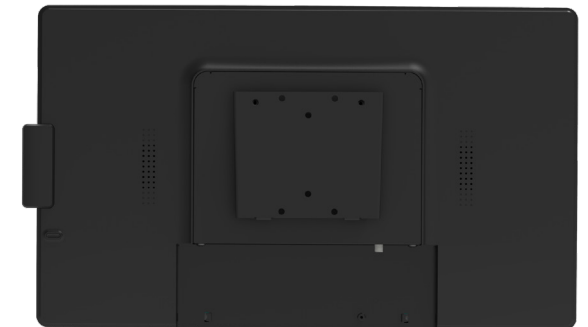
Element K22 is a 21.5" Windows or Android based Full Flat Touch Screen LCD with 7H hardness durable glass with 16.16mm Slim Bezel free design and 1920 x 1080 (FHD) resolution.

With a sleek slim design (37.9mm width) the fanless J1900, i3 or Rockchip RK3399 CPU, noise-free Panel PC is ideally suited in roles such as Self-Check In and Self-Check Out, Self Service Terminals (Self Ordering), or act as Digital Signage Display / Information Display.

**Windows Interface**



**Android Interface**



| OS      | SKU         | DESCRIPTION  |
|---------|-------------|--|
| Android | TTETK22A001 | <p><b>ELEMENT K22A RK-3399 2/16 21.5/P BLK AD9 INCL:</b></p> <ul style="list-style-type: none"> <li>• 21.5" AIO Android 9 Touch Screen Computer</li> <li>• RK3399 with 4GB Ram and 32GB Storage</li> <li>• 3 year warranty</li> </ul>                                      |
| Windows | TTETK22W002 | <p><b>ELEMENT K22W J1900 8/128 21.5P N/STD BLK W10 INCL:</b></p> <ul style="list-style-type: none"> <li>• 21.5" AIO Windows 10 IoT Ent 2019 Touch Screen Computer</li> <li>• Intel Baytrail J1900 CPU with 8GB Ram and 128GB Storage</li> <li>• 3 year warranty</li> </ul> |
| Windows | TTETK22W004 | <p><b>ELEMENT DEMO K22W I3 8/128 21.5/P STD BLK W10 INCL:</b></p> <ul style="list-style-type: none"> <li>• 21.5" AIO Windows 10 IoT Ent 2019 Touch Screen Computer</li> <li>• Intel i3-7100U CPU with 8GB Ram and 128GB Storage</li> <li>• 3 year warranty</li> </ul>      |

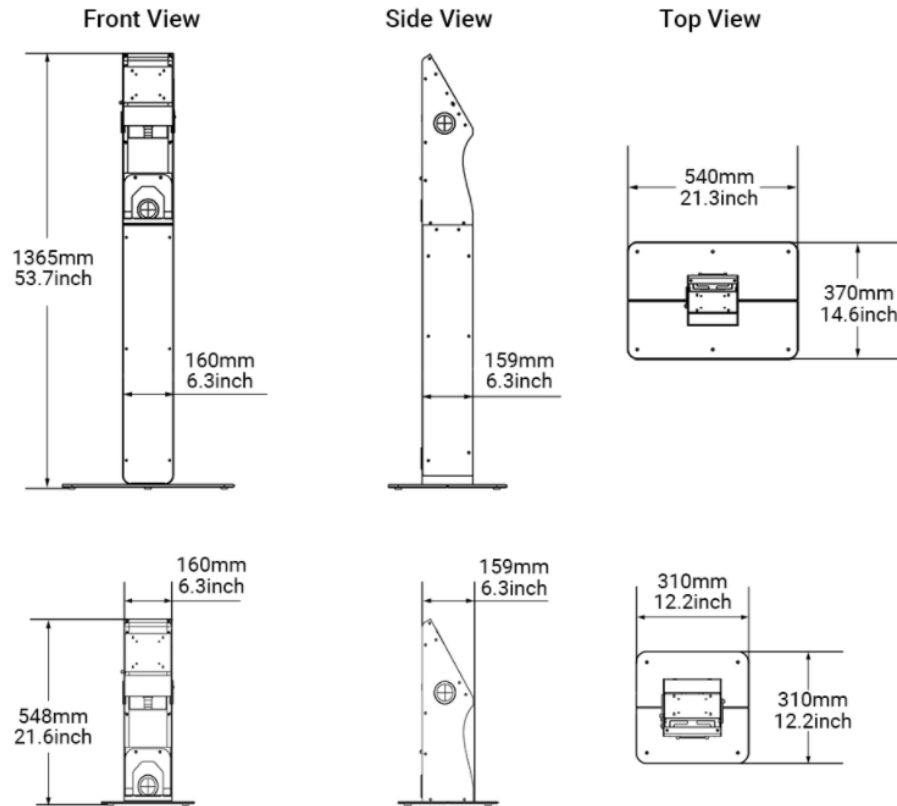


## ELEMENT 22" SELF-SERVICE KIOSK – COUNTER AND FLOOR STAND

Do you need a versatile and compact mounting solution or you Kiosk to fit into existing environments?

The Element SSK2201-C and SSK2201-F provide the flexibility to mount the Element K22 in any existing and new environment you need for creating a Self-Service Kiosk.

| ITEM             | SKU           | DESCRIPTION                                      |
|------------------|---------------|--|
| Counter          | KIETSSK22E001 | Element Kiosk Stand Desktop Black for SSK-22E    |
| Floor (Optional) | KIETSSK22E002 | Element Kiosk Stand Floor Base Black for SSK-22E |



(Unit mm)



## 4 ELEMENT 22" SELF-SERVICE KIOSK – THERMAL RECEIPT PRINTING (OPTIONAL)

Adding receipt printing to your Element Self-Service Kiosk is simple. The SSK2201-C stand includes a dedicated receipt printer space designed for the Element RW60 and Epson TM-M30II.

| Brand   | SKU           | DESCRIPTION  |
|---------|---------------|--|
| Element | PRELRW60003   | Element Thermal Receipt Printer RW60 Ethernet/Serial/USB, Black                |
| Epson   | PREC31CJ27222 | Epson Thermal Receipt Printer TM-M30II USB/Ethernet, Incl. Power Supply, Black |



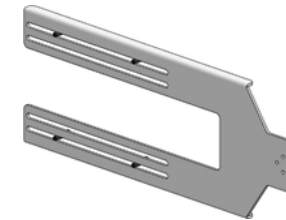
# ELEMENT 22" SELF-SERVICE KIOSK – ACCESSORY MOUNTS (OPTIONAL)

5

## VESA Accessory Mount

Adding accessory mount to the Element 22" Self-Service Kiosk has never been easier. Adding an accessory mount to the Element SSK2201-C stand and Element K22 allows you to attach any accessories to your kiosk solution using Ergonomic Solutions Multi-Grip platform.

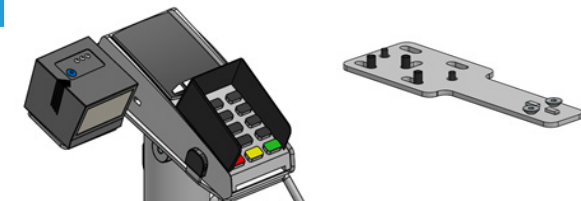
| Brand               | SKU          | DESCRIPTION   |
|---------------------|--------------|---|
| Ergonomic Solutions | MSSPELO00102 | SpacePole Screen Add-on Bracket VESA for Element 22" Self-Service Kiosk (Black) |



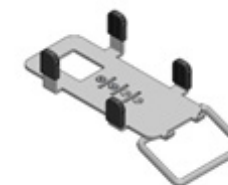
## Scanner Mount

Do you need to add a 2D Scanner to your Element Self-Service Kiosk Solution for scanner barcodes, products, or loyalty cards? Using the Ergonomic Solutions scanner Multi-Grip adapter bracket designed for the Datalogic GFS4100, you can mount the scanner on the left or right using the existing payment terminal bracket.

| Brand               | SKU             | DESCRIPTION                          |
|---------------------|-----------------|--------------------------------------|
| Ergonomic Solutions | MSSPSEKTOR01402 | Scanner Bracket                      |
| Scanner             | SCDAGFS44702DU  | Datalogic Gryphon GFS4400 2D Scanner |



| Brand    | SKU              | DESCRIPTION  |
|----------|------------------|--|
| Ingenico | MSSPINGM5000MH02 | SPACEPOLE MULTIGRIP W/HANDLE INGENICO MOVE 5000 BK |
| Ingenico | MSSPING3501MH02  | SPACEPOLE MULTIGRIP W/HANDLE INGENICO IPP350 BLK   |
| Ingenico | MSSPINGM5001MH02 | SPACEPOLE MULTIGRIP W/HD INGENICO DOCK/MOVE 5000   |
| Ingenico | MSSPING202MH02   | SPACEPOLE MULTIGRIP HDL INGENICO IWL220/250/280 BK |
| Ingenico | MSSPING2201MH02  | SPACEPOLE MULTIGRIP HANDLE INGENICO ICT220/250 BLK |
| Ingenico | MSSPING5000MH02  | SPACEPOLE MULTIGRIP W/HANDLE INGENICO 5000 BLK     |
| Ingenico | MSSPINGM2500MH02 | SPACEPOLE MULTIGRIP W/HANDLE INGENICO MOVE 2500    |
| Quest    | MSSPQUEST720MH02 | SPACEPOLE MULTIGRIP W/HANDLE QUEST QT720 BLK       |
| Tyro     | MSSPBAN701MH02   | SPACEPOLE MULTIGRIP W/HANDLE QUEST QT720 BLK       |
| Tyro     | MSSPBAN501MH02   | SPACEPOLE MULTIGRIP W/HANDLE TYRO YOMANI BLK       |
| Verifone | MSSPVER401MH02   | SPACEPOLE MULTIGRIP W/HANDLE VERIFONE M400 BLK     |
| Verifone | MSSPVER171MH02   | SPACEPOLE MULTIGRIP W/HANDLE VERIFONE VX820 BLK    |
| Verifone | MSSPVER690MH02   | SPACEPOLE MULTIGRIP W/HANDLE VERIFONE VX690 BLK    |
| Verifone | MSSPVER805MH02   | SPACEPOLE MULTIGRIP W/HANDLE VERIFONE VX805 BLK    |
| Verifone | MSSPVER400MH02   | SPACEPOLE MULTIGRIP W/HANDLE VERIFONE P400 BLK     |
| Verifone | MSSPVER071MH02   | SPACEPOLE MULTIGRIP W/HANDLE VERIFONE VX520 BLK    |



Ingenico Move 5000



Verifone VX820 with Handle





## ABOUT ELEMENT

Element is a technology provider specialising in systems that enable customer service and engagement.

We design and build devices that are used by customers and with customers, wherever they need service. Our mission is to help our clients engage with their customers to increase trust, convenience and loyalty.

We provide 'point of service' devices - for delivering information, assistance and sales transactions wherever the customer needs them.

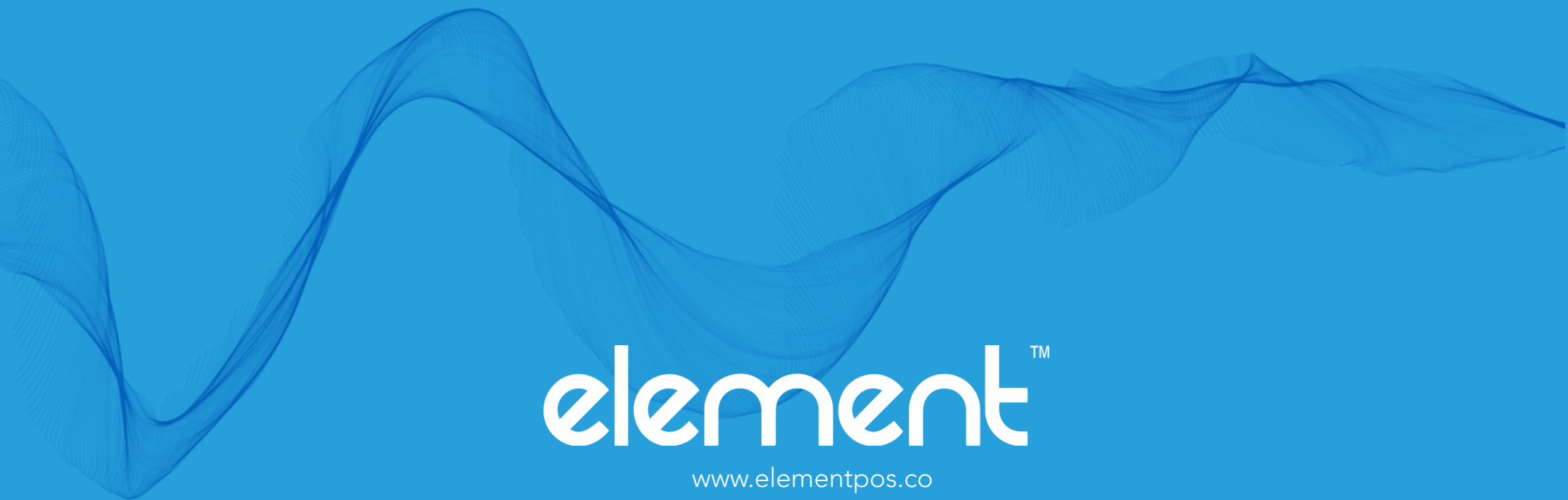
Our range includes:

- » Point of Sale Systems
- » Kiosks
- » Mobile Devices
- » Digital Displays

All our products are designed by experts with in-depth experience of how they will be used, and the demands that will be placed on them. That's what makes Element products tough, resilient, designed for purpose, ergonomics and style.

Element products are for retailers, QSRs, cinemas, shopping centres, event venues and healthcare providers who want to take customer service to the next level. Our range is available exclusively through Sektor distribution in Australia, New Zealand, Malaysia and Thailand.

Element takes service to the customer, wherever they need it, through **DESIGN, QUALITY AND PURPOSE.**



element™

[www.elementpos.co](http://www.elementpos.co)