

RETAIL WEIGHING SOLUTION™

CL5200 SERIES

Label Printing Scale

- Trade Approved (NMI No. 6/4D/382)
- Flexible & reliable wired network system
- Easy loading printing cartridge
- Free format label design
- User friendly PC software



Large LCD display



Easy loading
Print Cartridge



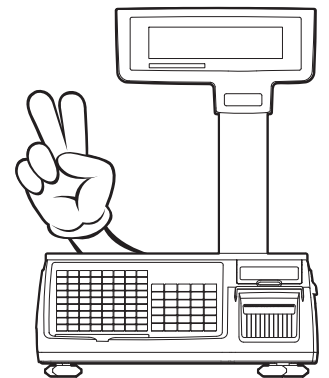
Direct PLU keys
& function keys



Large LCD display

Print Cartridge

Direct PLU keys & function keys



CAS

www.casscale.com.au

CL5200 SERIES | Label Printing Scale

Hardware

PLU keys

Double-click function provides easy access to the key's secondary PLU. 6000 PLUs with commodity name or ingredients.

- Standard: 108 PLU keys
[54 keys x 2 (double -click)]
- Pole Type: 144 PLU keys
[72 keys x 2 (double -click)]



Large display

Large full graphic LCD display is suitable for any environment. (208 x 48 dot graphic LCD).
- Tare / Weight / Unit / Price :
4 / 5 / 6 / 6 digits



High speed printer

High speed thermal printer for label printing. Guaranteed satisfaction with 100mm/s speed and 202dpi resolution.



Printer cartridge

Cartridge loading type supports quick and easy replacement of a new label roll.



Various interface connections

It supports RS-232c, Cash drawer, wired and USB Device.



Menu system

No need to scroll through menus for programming settings. Unique 4 digit 'Menu Code' entry pin helps pinpoint the desired program field.
ex) Menu code '1120' is for editing PLU name.

PRODUCT LINE UP

- CL5200 is compatible with all CAS label printing scales in the same network

CL5200-B



CL5200-P



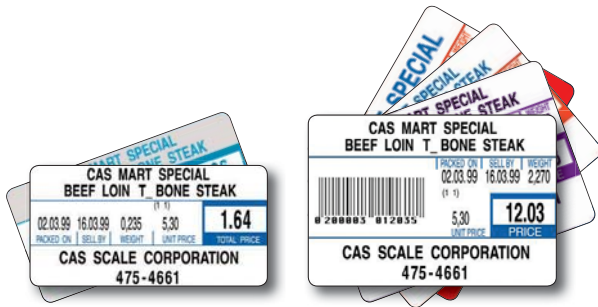
CL5200 SERIES | Label Printing Scale

Label Printing

Label Formats

There are 45 preset labels installed in the scale and an additional 20 formats can be modified freely with CL-Works PC program.

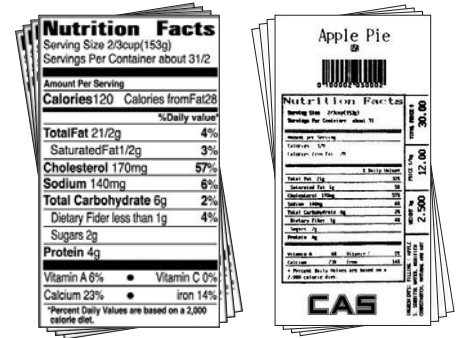
- Continuous label
- Up to 120mm label length



Barcode

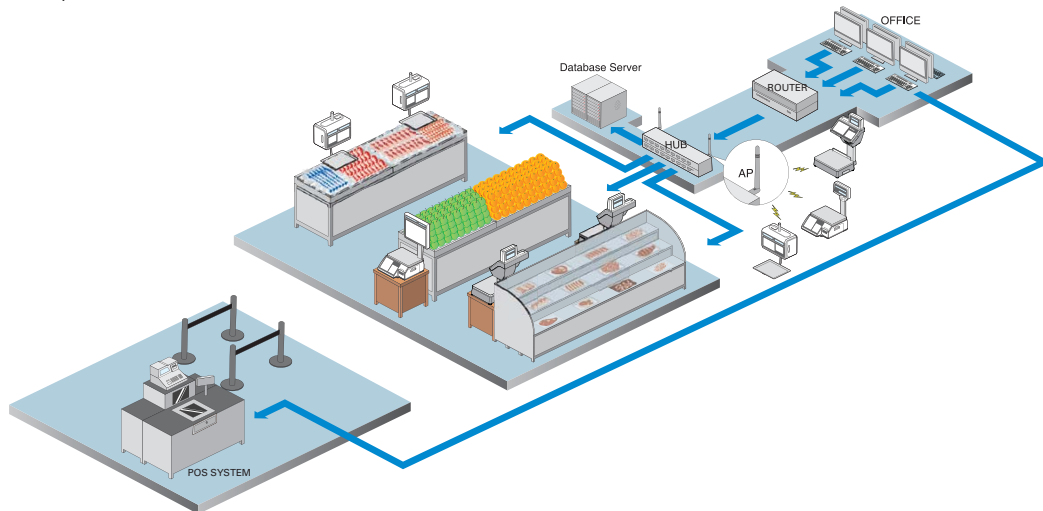
Almost every conventional 1-Dimensional barcode types are available.

- UPC, EAN13, EAN13A5, I2OF5,
- CODE128, CODE39, CODE93,
- CODABAR, IATA20F5



Network System

- TCP/IP communication protocol
- One to one & multi to multi & wired network
- Network structure for
 - Large, medium and small independent markets
 - Pre-pack

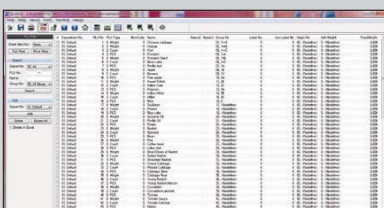


Network Example

PC software: CL-Works

CL5200 supports PLU programming, store data, sales report, label editor and much more.

You can control all the program data by CL-Works. CL5000, CL5000J and CL5500 also share this software with CL5200.



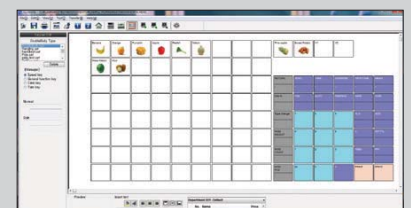
PLU Editor

- Easy PLU control.
- Allows PLUs to be managed by excel.



Label Editor

- 20 modifiable label formats.
- Easy downloading of label formats



Keypad Editor

- Easy to setup and download
- Keypad design - Can use color or images.

CL5200 SERIES

Label Printing Scale



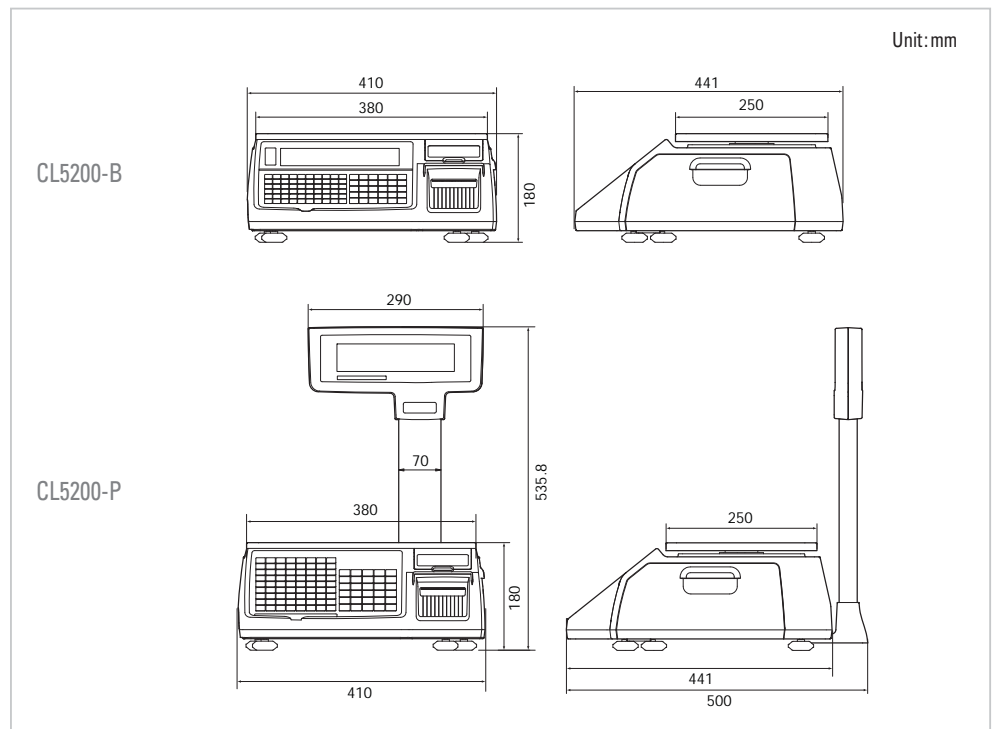
FEATURES

- Memory capacity: 6,000 PLUs & 1,000 ingredients
- Supports free label format design
- Cartridge-loading-type label installation
- 45 fixed format & 20 customized format design
- Various interfaces
- Combined wide LCD display

SPECIFICATIONS

Model	CL5200	
Max.capacity (kg)	6/15	15/30
Readability (g)	2/5	5/10
External resolution	1/3,000(dual interval)	
Display type	Graphic LCD(208x48)	
Printing speed	Max. 100mm/sec	
Printer resolution	202 dpi	
Label size (mm)	Width:40~60, Length:30~120	
Power	AC 100~240V, 50/60Hz	
Operating temperature	-10°C ~ +40°C	
Platter size (mm)	B,P Type:380(W)x250(D)	
Dimensions (mm)	B Type:409(W)x441(D)x180(H)	
	P Type:410(W)x500(D)x535.8(H)	
Product weight (kg)	B Type:6.95, P Type:7.65	

DIMENSIONS



Distributor: Goodson Imports Pty Ltd,
Representation in all main States of Australia and New Zealand,
Ph: 02-8875 4544 Fax 02-8875 4588, www.goodson.com.au



UNIT 8, NORTHLINK, 459 TUFNELL ROAD

BANYO QLD 4014, AUSTRALIA

TEL: +61 (0)7 3267 7767 FAX: +61 (0)7 3267 1818

EMAIL: sales@cassscale.com.au WEB: www.cassscale.com.au

Specifications are subject to change for improvement without prior notice.

CAS