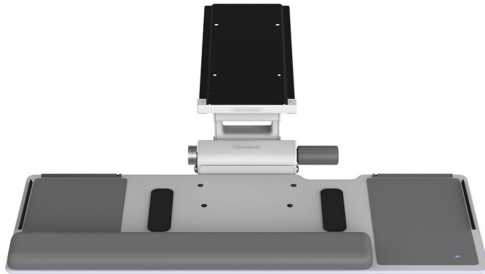


Keyboard Systems

Model Number: 6FW259-S12



FEATURES

- Intuitive height adjustment that requires no locks, levers or controls
- Dial-a-tilt positioning that allows you to type at the angle most comfortable for you
- Ultra-thin profile to provide maximum knee clearance
- Superior design to provide maximum strength and stability yet extremely lightweight
- Raised tilt mechanism to protect the keyboard from collisions with the edge of the desk

SPECIFICATIONS

Keyboard Mechanism

- Tilt adjustment range: 0° to -15°
- Exceeds BIFMA standards
- Made primarily of powder-coated steel
- 15 years warranty

Keyboard Platform

- Wide range of keyboard options
- Made of 6mm (1/4") phenolic resin
- Durable and slim profile
- Available with Technogel or foam palm supports

CONFIGURATION DETAILS

CODE DESCRIPTION

6FW	- 6FW White for Height-Adj Surfaces
259	- Float Board - For Float Table
-	- No Mouse Platform
S	- 485mm (19") Slim Palm Support
12	- 320 mm (12.5") Track Length

SUSTAINABILITY

A selection of sustainability highlights for keyboard systems:

- Recycled content: up to 19% post-consumer
- Made predominantly of steel, which is highly recyclable

FIND OUT MORE

[Humanscale.com](https://www.humanscale.com)