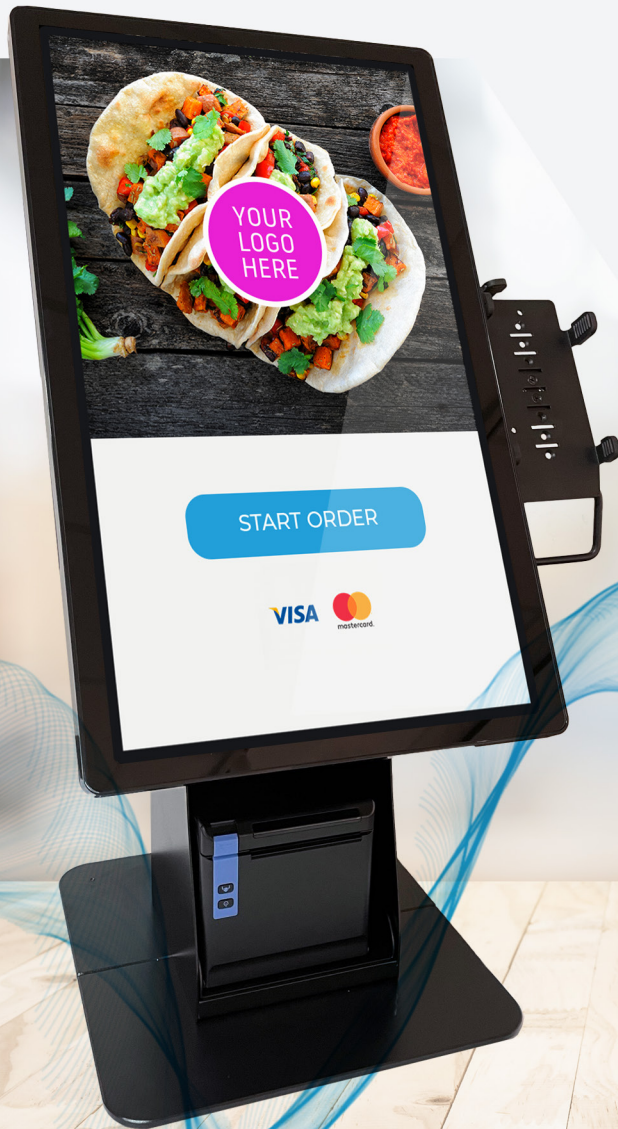


element™



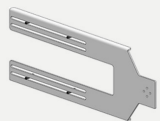
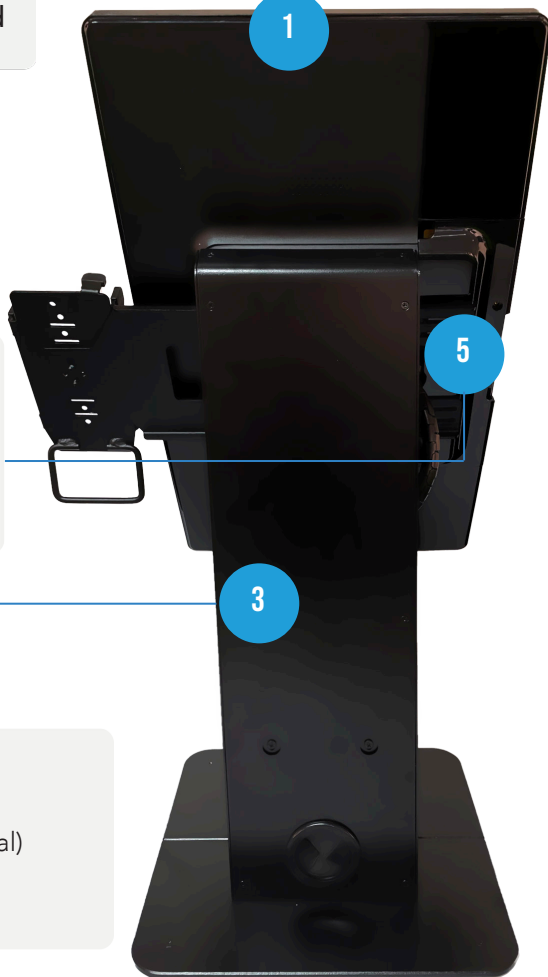
ELEMENT 22" SELF SERVICE KIOSK

MODULARITY TO SUIT YOUR DESIRED APPLICATIONS

ELEMENT 22" SELF SERVICE KIOSK

MODULARITY TO SUIT YOUR DESIRED APPLICATIONS

Element 22" All-in-One Windows or Android Self-Service Kiosk and Counter Stand

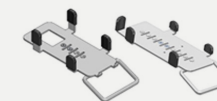
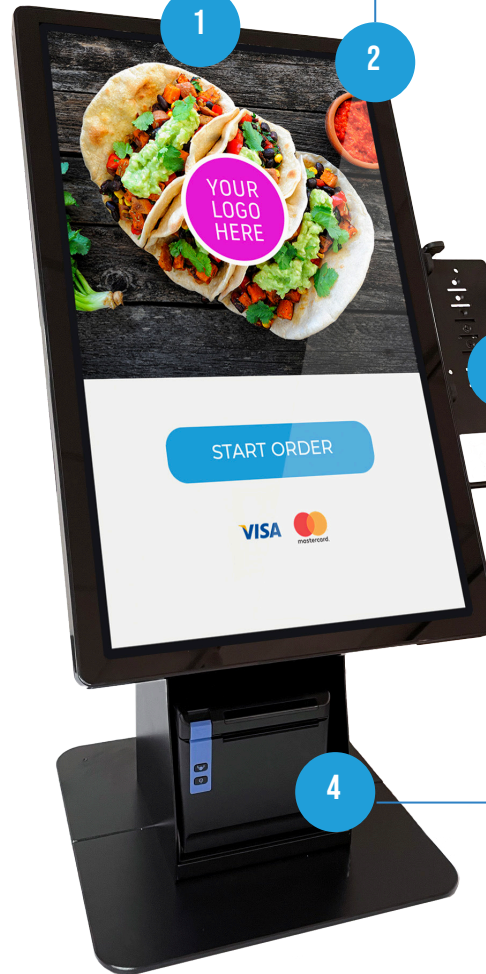


VESA Payment Terminal Mount (Optional)

Counter Stand (Floor Stand optional)



Element K22 All-in-One Windows or Android Touch Screen Kiosk



Payment Terminal Multi-Grip Mounts (Optional)



Thermal Receipt Printer (Optional)

For further details specifications and datasheets please visit: www.elementpos.co

1 ELEMENT SELF-SERVICE BUNDLE WITH ELEMENT 22" KIOSK AND COUNTER STAND

The Element Self Service Kiosk E-Series is a quality, affordable and modular solution, designed to meet the self-service needs of customers, retailers and many industry applications. Offering a counter top or free standing floor stand with a 22" all-in-one touch computer you can add optional accessories and peripherals to allow innovative ways for your customers to interact with your brand however you choose:

- Self Check Out
- Self Ordering
- Guest Check-In
- Visitor Management
- Endless Aisle
- Product information
- Digital Signage
- Price Checker

To provide you the versatility to suit the application or software, the Element SSK uses an Element K22 All-in-one 22" projective capacitive touch screen computer offering both Android and Windows operating system, mounted on a purposefully designed counter stand with optional floor stand extension. The SSK2201-C Stand includes a dedicated receipt printer space with full cable management and optional accessory mount which allows you to simply add a payment terminal to your kiosk or add an additional 2D Barcode scanner. The Element SSK E-Series is simplified to allow ease of installation and provide you the modularity to suit your desired applications.

OS	SKU	DESCRIPTION
Android	BU10982	<p>ELEMENT KIOSK SSK-E 21.5P 4/32 AD9 + DESK/STD INCL:</p> <ul style="list-style-type: none"> • 21.5" AIO Android 9 Touch Screen Computer • RK3399 with 4GB Ram and 32GB Storage • SSK2201-C Counter Stand Black • 3 year warranty
Windows	BU10983	<p>ELEMENT KIOSK SSK-E 21.5P J1900 8/128 W10+DESK/STD INCL:</p> <ul style="list-style-type: none"> • 21.5" AIO Windows 10 IoT Ent 2019 Touch Screen Computer • Intel Baytrail J1900 CPU with 8GB Ram and 128GB Storage • SSK2201-C Counter Stand Black • 3 year warranty
Windows	BU10984	<p>ELEMENT KIOSK SSK-E 21.5P I3 8/128 W10 + DESK/STD INCL:</p> <ul style="list-style-type: none"> • 21.5" AIO Windows 10 IoT Ent 2019 Touch Screen Computer • Intel i3-7100U CPU with 8GB Ram and 128GB Storage • SSK2201-C Counter Stand Black • 3 year warranty



2 ELEMENT 22" ALL-IN-ONE WINDOWS OR ANDROID TOUCH SCREEN KIOSKS

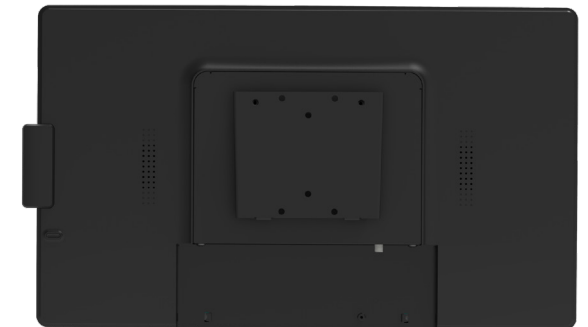
Element K22 is a 21.5" Windows or Android based Full Flat Touch Screen LCD with 7H hardness durable glass with 16.16mm Slim Bezel free design and 1920 x 1080 (FHD) resolution.

With a sleek slim design (37.9mm width) the fanless J1900, i3 or Rockchip RK3399 CPU, noise-free Panel PC is ideally suited in roles such as Self-Check In and Self-Check Out, Self Service Terminals (Self Ordering), or act as Digital Signage Display / Information Display.

Windows Interface



Android Interface



OS	SKU	DESCRIPTION
Android	TTETK22A001	<p>ELEMENT K22A RK-3399 2/16 21.5/P BLK AD9 INCL:</p> <ul style="list-style-type: none"> • 21.5" AIO Android 9 Touch Screen Computer • RK3399 with 4GB Ram and 32GB Storage • 3 year warranty
Windows	TTETK22W002	<p>ELEMENT K22W J1900 8/128 21.5P N/STD BLK W10 INCL:</p> <ul style="list-style-type: none"> • 21.5" AIO Windows 10 IoT Ent 2019 Touch Screen Computer • Intel Baytrail J1900 CPU with 8GB Ram and 128GB Storage • 3 year warranty
Windows	TTETK22W004	<p>ELEMENT DEMO K22W I3 8/128 21.5/P STD BLK W10 INCL:</p> <ul style="list-style-type: none"> • 21.5" AIO Windows 10 IoT Ent 2019 Touch Screen Computer • Intel i3-7100U CPU with 8GB Ram and 128GB Storage • 3 year warranty

3

ELEMENT 22" SELF-SERVICE KIOSK – COUNTER AND FLOOR STAND

Do you need a versatile and compact mounting solution or you Kiosk to fit into existing environments?

The Element SSK2201-C and SSK2201-F provide the flexibility to mount the Element K22 in any existing and new environment you need for creating a Self-Service Kiosk.

ITEM	SKU	DESCRIPTION
Counter	KIETSSK22E001	Element Kiosk Stand Desktop Black for SSK-22E
Floor (Optional)	KIETSSK22E002	Element Kiosk Stand Floor Base Black for SSK-22E



4 ELEMENT 22" SELF-SERVICE KIOSK – THERMAL RECEIPT PRINTING (OPTIONAL)

Adding receipt printing to you Element Self-Service Kiosk is simple. The SSK2201-C stand includes a dedicated receipt printer space designed for the Element RW60 and Epson TM-M30II.

Brand	SKU	DESCRIPTION
Element	PRELRW60003	Element Thermal Receipt Printer RW60 Ethernet/Serial/USB, Black
Epson	PREC31CJ27222	Epson Thermal Receipt Printer TM-M30II USB/Ethernet, Incl. Power Supply, Black



For further details specifications and datasheets please visit: www.elementpos.co

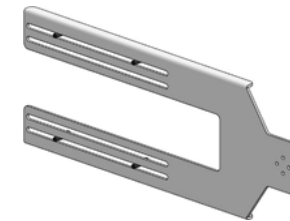
ELEMENT 22" SELF-SERVICE KIOSK – ACCESSORY MOUNTS (OPTIONAL)

5

VESA Accessory Mount

Adding accessory mount to the Element 22" Self-Service Kiosk has never been easier. Adding an accessory mount to the Element SSK2201-C stand and Element K22 allows you to attach any accessories to your kiosk solution using Ergonomic Solutions Multi-Grip platform.

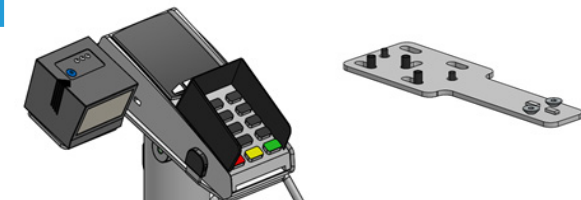
Brand	SKU	DESCRIPTION
Ergonomic Solutions	MSSPELO00102	SpacePole Screen Add-on Bracket VESA for Element 22" Self-Service Kiosk (Black)



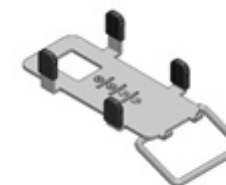
Scanner Mount

Do you need to add a 2D Scanner to your Element Self-Service Kiosk Solution for scanner barcodes, products, or loyalty cards? Using the Ergonomic Solutions scanner Multi-Grip adapter bracket designed for the Datalogic GFS4100, you can mount the scanner on the left or right using the existing payment terminal bracket.

Brand	SKU	DESCRIPTION
Bracket	TBA	Scanner Bracket
Scanner	SCDAGFS44702DU	Datalogic Gryphon GFS4400 2D Scanner



Brand	SKU	DESCRIPTION
Ingenico	MSSPINGM5000MH02	SPACEPOLE MULTIGRIP W/HANDLE INGENICO MOVE 5000 BK
Ingenico	MSSPING3501MH02	SPACEPOLE MULTIGRIP W/HANDLE INGENICO IPP350 BLK
Ingenico	MSSPINGM5001MH02	SPACEPOLE MULTIGRIP W/HD INGENICO DOCK/MOVE 5000
Ingenico	MSSPING202MH02	SPACEPOLE MULTIGRIP HDL INGENICO IWL220/250/280 BK
Ingenico	MSSPING2201MH02	SPACEPOLE MULTIGRIP HANDLE INGENICO ICT220/250 BLK
Ingenico	MSSPING5000MH02	SPACEPOLE MULTIGRIP W/HANDLE INGENICO 5000 BLK
Ingenico	MSSPINGM2500MH02	SPACEPOLE MULTIGRIP W/HANDLE INGENICO MOVE 2500
Quest	MSSPQUEST720MH02	SPACEPOLE MULTIGRIP W/HANDLE QUEST QT720 BLK
Tyro	MSSPBAN701MH02	SPACEPOLE MULTIGRIP W/HANDLE QUEST QT720 BLK
Tyro	MSSPBAN501MH02	SPACEPOLE MULTIGRIP W/HANDLE TYRO YOMANI BLK
Verifone	MSSPVER401MH02	SPACEPOLE MULTIGRIP W/HANDLE VERIFONE M400 BLK
Verifone	MSSPVER171MH02	SPACEPOLE MULTIGRIP W/HANDLE VERIFONE VX820 BLK
Verifone	MSSPVER690MH02	SPACEPOLE MULTIGRIP W/HANDLE VERIFONE VX690 BLK
Verifone	MSSPVER805MH02	SPACEPOLE MULTIGRIP W/HANDLE VERIFONE VX805 BLK
Verifone	MSSPVER400MH02	SPACEPOLE MULTIGRIP W/HANDLE VERIFONE P400 BLK
Verifone	MSSPVER071MH02	SPACEPOLE MULTIGRIP W/HANDLE VERIFONE VX520 BLK



Ingenico Move 5000



Verifone VX820 with Handle



ABOUT ELEMENT

Element is a technology provider specialising in systems that enable customer service and engagement.

We design and build devices that are used by customers and with customers, wherever they need service. Our mission is to help our clients engage with their customers to increase trust, convenience and loyalty.

We provide 'point of service' devices - for delivering information, assistance and sales transactions wherever the customer needs them.

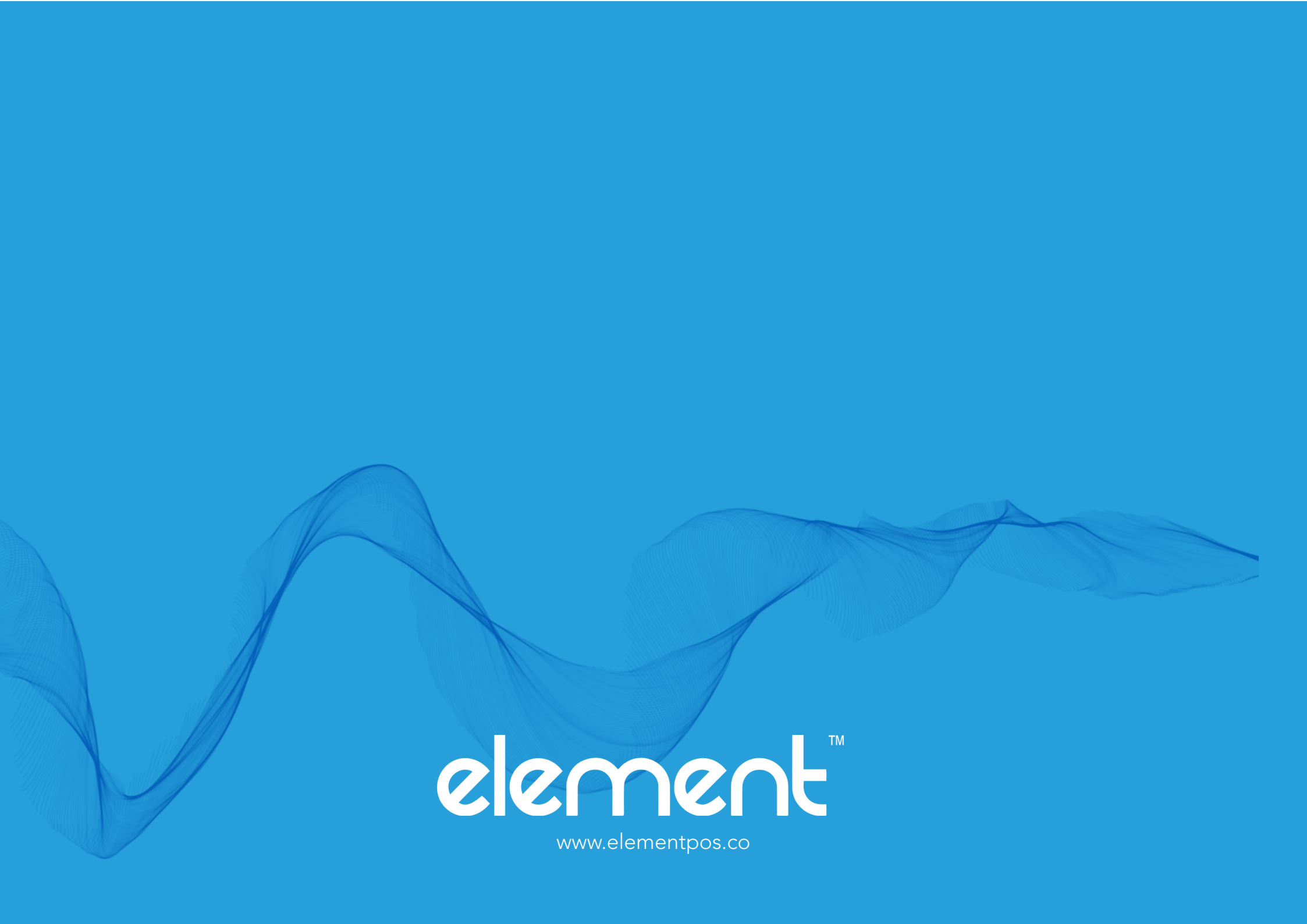
Our range includes:

- » Point of Sale Systems
- » Kiosks
- » Mobile Devices
- » Digital Displays

All our products are designed by experts with in-depth experience of how they will be used, and the demands that will be placed on them. That's what makes Element products tough, resilient, designed for purpose, ergonomics and style.

Element products are for retailers, QSRs, cinemas, shopping centres, event venues and healthcare providers who want to take customer service to the next level. Our range is available exclusively through Sektor distribution in Australia, New Zealand, Malaysia and Thailand.

Element takes service to the customer, wherever they need it, through **DESIGN, QUALITY AND PURPOSE.**



element™

www.elementpos.co